



# STORAGE SOLUTIONS

---

## CABINETS AND DESKS



# CABINETS AND DESKS

## Economical Storage Cabinets

- Quick, easy shelf adjustment on 2" centers.
- Hinged doors open full 180 degrees.
- Full height hat channel reinforces door alignment.
- Flush fronts, backs and sides permit side-by-side installations, and/or exposed backs.
- Polished chrome plated handles with built-in grooved key lock.
- Three-point locking system offers maximum security.
- Lock and keys included.
- Tough powder coat finish.
- Shipped knocked down; assembly available.
- Available colors: Almond, Gray.



Item Number	Overall Dimensions W x D x H	Number of Shelves
11-10361842SC	36" x 18" x 42"	2
11-10361878SC	36" x 18" x 78"	4
11-10362478SC	36" x 24" x 78"	4
11-10482478SC	48" x 24" x 78"	4



## Cabinet Shop Desk

- Four compartment organizer, slanted writing surface.
- Locking double doors, adjustable full size shelf.
- Cylinder locking drawer on steel ball bearing slides.
- Hinged doors open full 180 degrees.
- Drawer with cylinder lock 24"W x 28"D x 3½" H.
- Durable powder coat finish.
- Shipped knocked down; assembly available.
- Lock & key included.
- Available colors: Almond, Gray.

Item Number	Overall Dimensions W x D x H	Number of Shelves
11-10343053CSD	34½" x 30" x 53"	1

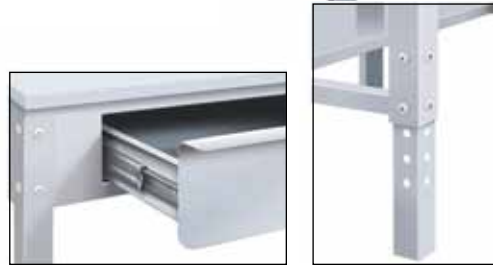


## Foreman's Desk

- Four compartment organizer, slanted writing surface.
- Adjustable legs: 36" to 42½".
- Cylinder locking drawer on steel ball bearing slides.
- Supports most large screen computer monitors.
- 15"D lower shelf included for additional supply storage.
- Powder coat finish.
- Lock and keys included.
- Shipped knocked down; assembly available.
- Available colors: Almond, Gray.



Item Number	Overall Dimensions W x D x H
11-10343053FSD	34½" x 30" x 53"



## Visible Storage Cabinets

- Plexiglass door inserts bring the inside out.
- Hinged doors open full 180 degrees.
- Great for storing medical, office, or shipping supplies.
- Die-cast handle includes 2 keys.
- Three-point locking system offers maximum security.
- Four shelves adjustable on 2" centers, 180lbs. shelf capacity.
- Contemporary styling with flush fronts, sides and backs, and rounded front corners.
- Shipped knocked down; assembly available.
- Available colors: Almond, Gray.

Item Number	Overall Dimensions W x D x H	Number of Shelves
11-10361878SCV	36" x 18" x 78"	4



# CABINETS AND DESKS

## Wall-Hung Foreman's Desk

- Four compartment organizer, slanted 34½" x 30" writing surface.
- Mounts to the wall.
- Cylinder locking drawer on steel ball bearing slides.
- Mounting brackets included.
- Powder coat finish.
- Lock and keys included.
- Shipped knocked down; assembly available.
- Available colors: Almond, Gray.



Item Number	Overall Dimensions W x D x H
11-10242830WFSD	34½" x 30" x 33½", plus braces



## Combination Cabinet

- Combines office supplies/package storage and wardrobe facility functions.
- Hinged doors open full 180 degrees.
- One full-width shelf at top for packages and hats.
- Balance of cabinet divided for supplies and full-length clothing storage.
- Four half shelves adjustable every 2".
- Shipped knocked down; assembly available.
- Available colors: Almond, Gray.

Item Number	Overall Dimensions W x D x H	Number of Shelves
11-10362478SCC	36" x 24" x 78"	4 half / 1 full



ASI Storage Solutions  
900 Clary Connector, Eastanollee, GA 30538 Tel:  
706.827.2720 Fax: 706.827.2710  
E-Mail: [info@asilockers.com](mailto:info@asilockers.com) Web: [asilockers.com](http://asilockers.com)

Distributed by: