

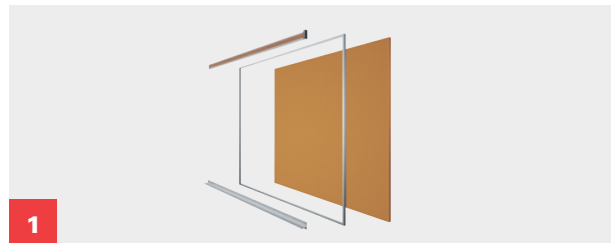
# Office Products Selection



# THE FLEXIBILITY TO CREATE VISUAL DISPLAY SYSTEMS WITH QUALITY AND PERFORMANCE FOR ANY OFFICE INTERIOR

Since 1959 our goal has been to provide visual display products and services that meet and exceed aesthetic and performance requirements. Only ASI Group designs and manufactures high quality visual display products that are easy to install and require little maintenance. All inquiries welcome and if you don't see a solution here please do not hesitate to reach out to us. Welcome to the ASI Group—the world's leading manufacturer of partitions, washroom accessories, lockers, and visual display products. **Explore the new standard for basis of design in Visual Display Products.**

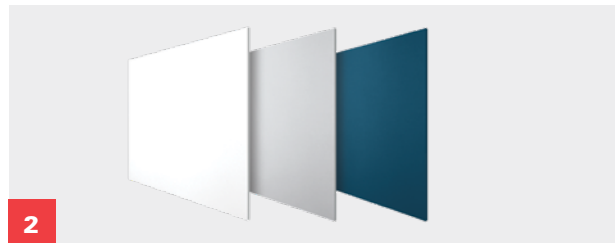
## HOW TO ORDER



### Pick your Frame

Choose a trim system that meets your aesthetic and performance requirements.

P. 4-5 **Trim Systems**



### Pick your Surface

Select from a variety of writing and tackboard surface options.

P. 6-7 **Porcelain Writing Surfaces**

P. 10-11 **Forbo® Tackboards**

P. 8-9 **Glass Writing Surfaces**





**WE ARE LASER FOCUSED ON DELIVERING EXACTLY WHAT YOU NEED—WHERE AND WHEN YOU NEED IT.**

ASI Group's Global Reach—see how on pages 18-19.



**U.S. Green Building Council (USGBC)**  
ASI Visual Display Products is committed to continuously delivering the most environmentally friendly products to the global marketplace.



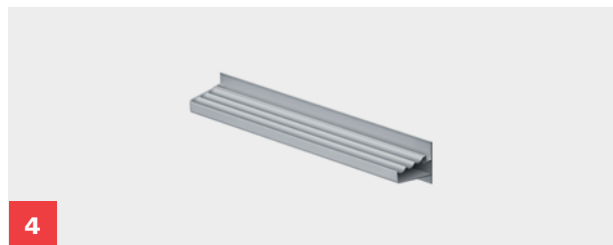
**3**

### Pick your Configuration

Select from vertical or horizontal sliding configurations that can be delivered pre-framed or unassembled.

**P. 14** Sizing Chart

**P. 15** Configurations



**4**

### Pick your Accessories

Choose from a variety of display and marker rails, accessories, directories, cases, and mobile units.

**P. 12** Mobile Units

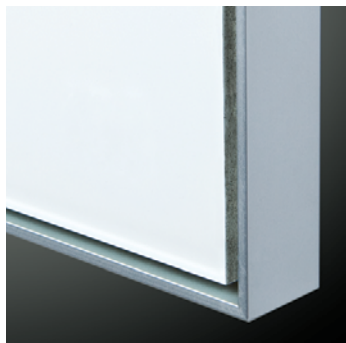
**P. 13** Rails & Accessories







# TRIM SYSTEMS



## ELITE REVEAL

### The floating clean-line trim system

The limitless versatility of our Elite Reveal framing system is unmatched. Our innovative 1/8" reveal comes standard on all installations and is available in Porcelain and Forbo. When your design calls for stylish, minimal aluminum framing, any number of materials can be used to create striking, crisp, clean installations that float off your finished wall surface.

- Minimal Framing
- 1/8" Reveal

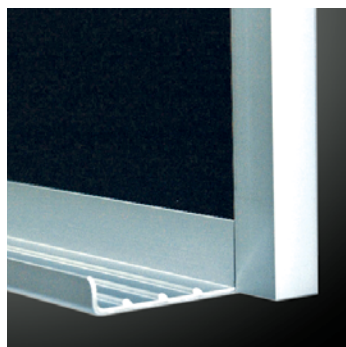


## SERIES 9100

### Slim Trim

Our slim and durable framing system that's available with a square or radius corner. The Series 9100 is available in 5 standard sizes and custom sizes.

- Radius corner is available in clear anodized aluminum
- Square corner is available in clear anodized aluminum
- Sophisticated narrow face trim
- 9/32" exposed frame

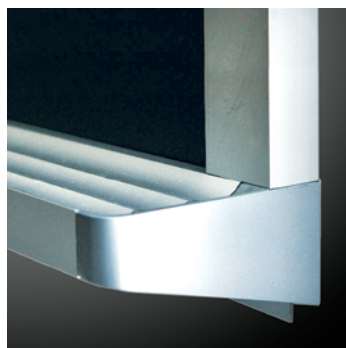


## SERIES 9800

### The subtle and elegant trim system

The most popular trim system, engineered to provide a permanent, direct-to-the-wall installation, at an economical price. With its striking 3/4" face, this series was designed for the discriminating designer who desires an elegant style trim that does not overpower the room but complements and harmonizes with modern decor schemes.

- Subtle Framing
- 3/4" Exposed Frame
- Available as a knock-down, multipanel option for customizable assembly on-site



## SERIES 9300

### The bold and heavy-duty trim system

A prominent, heavy-duty framing system, providing a permanent application with a retro flair. With its 1-1/2" wide face protruding 1/4" off the finished writing surface, Series 9300 units are available in a variety of finishes.

- Bold, Heavy-Duty Construction
- 1-1/2" Exposed Frame



## WRITING SURFACE OPTIONS

# PORCELAIN SURFACES

ASI Porcelain writing surfaces are made for busy offices and boisterous classrooms, providing a super-smooth writing surface that erases like magic and will not scratch, stain, or fade for as long as it is in use—guaranteed. It is the most popular writing surface for chalkboards and whiteboards, providing superior writability, durability, and erasability.



Shipped In  
**48**  
HOURS

Available to be  
shipped in 48 hours.

Sizes included in 48 hour  
offering are:

- 4' X 4'
- 4' X 6'
- 4' X 8'
- Series 9800 boards come framed all around with flat or angled trays. Other accessories can be specified as required.

- Lifetime warranty  
(on writing surface for the life of the building)
- Can be written on with dry-erase markers
- Optimum erasability—and easy to maintain
- Scratch, bacteria, chemical, and fire resistant—will not combust or release toxic fumes in the event of fire
- Greater color contrast
- Standard is high gloss white
- Premium color finishes available
- Colorfast—will not fade
- Safe and clean—releases no harmful chemicals into the environment
- Available in Series 9800, 9300, 9100 Radius and Square, Elite Reveal and Knock Down frames





## PORCELAIN COLOR SELECTION:

### GLOSS MARKERBOARDS



White  
High Gloss 29



White  
Low Gloss 29L

### ULTRA MATTE PORCELAIN



Green  
Ultra Matte 06

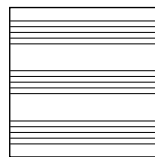


Black  
Ultra Matte 11

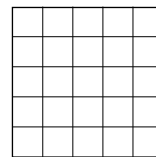
Chalk can be used to write on these porcelain surfaces.

Actual colors may vary slightly from those shown due to limitations in the printing process.

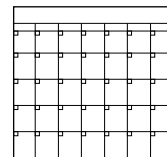
## CUSTOM GRAPHIC BOARDS\*:



Music Lines



Graph Coordinates



Calendar

\*Other custom graphics available - please call for additional information.



Visual Display  
Products

[asi-visualdisplayproducts.com](http://asi-visualdisplayproducts.com)



## WRITING SURFACE OPTIONS

# GLASS SURFACES

The performance of ASI Glass Markerboards is unmatched in the industry, allowing designers and architects the ability to showcase interiors with this striking product line. Its clean lines and superior erasability are achieved using only ASI's UltraClear™, 1/4" tempered glass, also known as museum glass. ASI Glass Markerboards are available in 3 framing styles and may be optionally specified with a backing that allows for magnetic applications when used with rare earth magnets.

### Features:

- All glass tempered
- Sizes up to 82" x 142"
- 1/4" low iron tempered UltraClear™ glass
- Custom graphics available
- Optional magnetic backing



**FRAMELESS GLASS**  
with edge grip stand-offs



**FRAMELESS GLASS**  
with hidden Z track bracket



**FRAMED GLASS**  
with hidden Z track bracket





## GLASS COLOR SELECTION:

### STANDARD COLOR

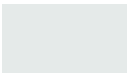


White 6529

### OPTIONAL COLORS



Magenta 6527



Pale Blue 6551



Taupe 6535



Red Orange 6562



Spring Green 6543



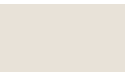
Winter Gray 6558



Winter Blue 6523



Light Gray 6508



Cream 6573



Purple 6520

Unlimited color selection available, please contact us for pricing at 905.822.4287 or email us at [estimating@asi-visualdisplayproducts.com](mailto:estimating@asi-visualdisplayproducts.com) (for US) or [estimating@asigroup-canada.com](mailto:estimating@asigroup-canada.com) (for Canada).

Colors subject to change.  
Actual colors may vary slightly from those shown due to limitations in the printing process.





**Available in:**

- Ready to mount rigid boards up to 5' x 8' *(see page 14 for size details)*
- 1/4" (6mm) thick
- Series 9800 and Knock Down frames

## FORBO®

Forbo® Bulletin Board is produced from natural and renewable raw materials. A combination of oxidized linseed oil, resin, and finely ground cork gives Forbo® its flexibility and resilience. This combination results in a product with exceptional durability and a sustainable footprint.

**Self-healing properties**

Its strength and resilience make Forbo® the ideal material for pin boards, notice boards, and all other surfaces where ideas and information are exchanged. The board material retains its grip and doesn't crumble like traditional soft boards as the pinholes close after extraction of the pins.

**Practical & hygienic**

Forbo® does not attract dust and has bacteriostatic properties. This makes it a practical solution in classrooms and a hygienic choice in healthcare environments where "get well" messages can be pinned behind the bed.

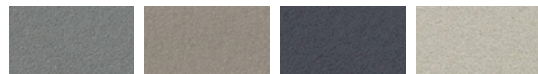




#### FORBO® BULLETIN BOARD COLOR SELECTION:

The choice for environments where a functional, washable, tackable surface is needed.

##### Standard Colors



Duck Egg  
2162

\*Potato Skin  
2182

Poppy Seed  
2204

Oyster Shell  
2206



Black Olive  
2209

\*5' High boards are available in:

- 2182 Potato Skin
- 2186 Blanched Almond
- 2166 Nutmeg Spice

##### Optional Colors



\*Nutmeg Spice  
2166

\*Blanched Almond  
2186

Brown Rice  
2187

Cinnamon Bark  
2207



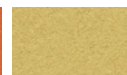
Mushroom Medley  
2208



Hot Salsa  
2210



Tangerine Zest  
2211



Fresh Pineapple  
2212



Baby Lettuce  
2213\*



Blue Berry  
2214

Forbo® is a registered trademark of Forbo Flooring Systems.  
Actual colors may vary slightly from those shown due to  
limitations in the printing process.



## MOBILE UNITS



## MOBILE UNITS

Mobile Units are constructed of welded steel framing with a durable baked enamel paint finish. Ball type casters are installed to each foot assembly to provide ease of movement.

ASI Mobile Units are offered in 2 surfaces providing various combinations of markerboards and tackboards to suit your individual requirements.

**Available in:**

- All panel types
- All units double sided
- 4' x 6', 4' x 8' (*horizontal*) and 6' x 4' (*vertical*) sizes
- Powder coated black frames
- Silent ball type caster—with brakes

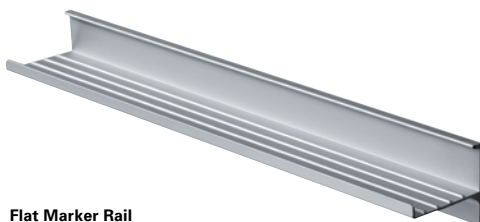




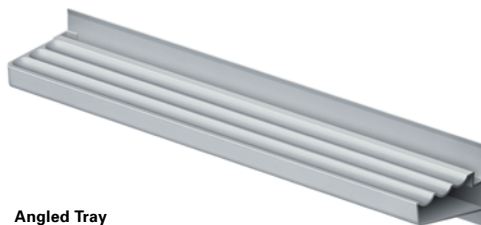
## RAILS & ACCESSORIES

### DISPLAY & MARKER RAILS

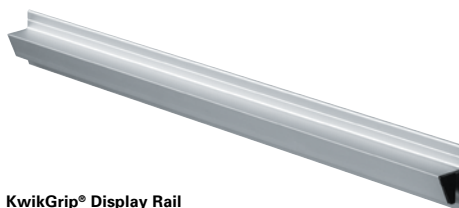
ASI offers an assortment of display rails from simple cork strips to the cleanliness of our unique KwikGrip® roller system. Each is available with a number of accessories—map hooks, roller brackets, or flag holders.



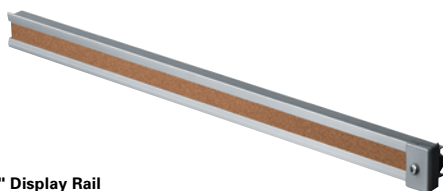
Flat Marker Rail



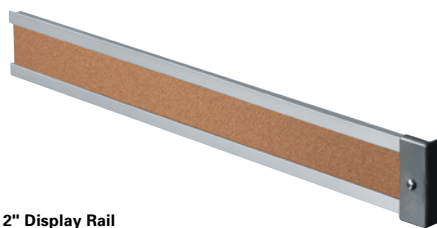
Angled Tray



KwikGrip® Display Rail

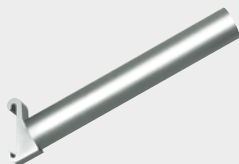


1" Display Rail

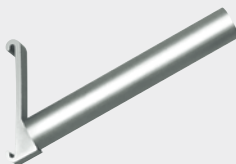


2" Display Rail

### ACCESSORIES



Flag holder for  
1" map rail



Flag holder for  
2" map rail



Roller Bracket

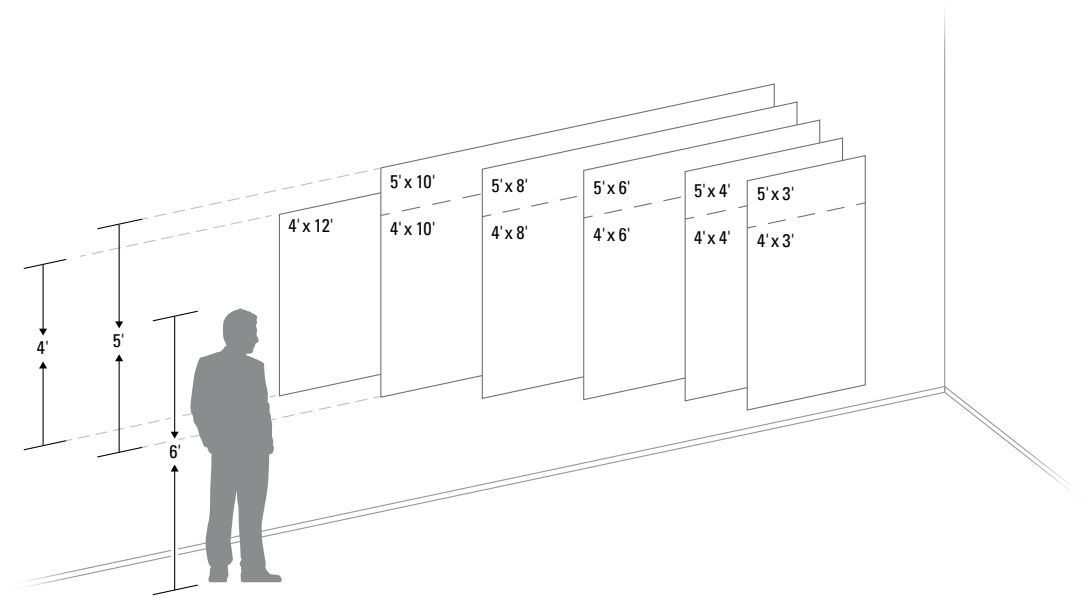


Map hook for  
1" map rail



Map hook for  
2" map rail



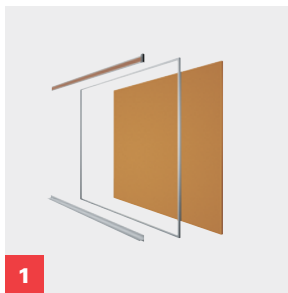


Sizes:	4' x 3'	4' x 4'	4' x 6'	4' x 8'	4' x 10'	4' x 12'	5' x 3'	5' x 4'	5' x 6'	5' x 8'	5' x 10'
Porcelain	■	■	■	■	■	■	■	■	■	■	
Glass	■	■	■	■	■	■	■	■	■	■	■
Forbo®*	■	■	■	■	■	■	■	■	■	■	

\*Forbo® is also available in 4' x 90' rolls or 6' x 90' rolls.

Boards larger than 5' x 8' are subject to longer lead times and availability.  
Elite Reveal is available in Porcelain and Forbo in sizes up to 5' x 8'.

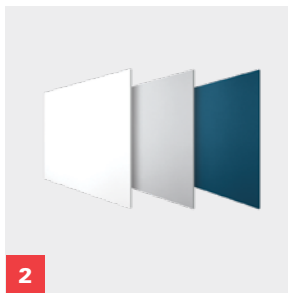
## HOW TO ORDER



1

### Pick your Frame

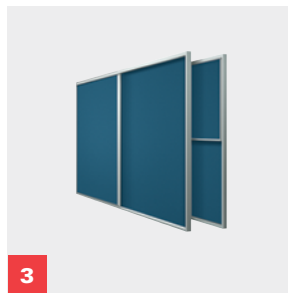
Choose a trim system that meets your aesthetic and performance requirements.



2

### Pick your Surface

Select from a variety of writing and tackboard surface options.



3

### Pick your Configuration

Select from vertical or horizontal sliding configurations and a wide range of accessories.



4

### Pick your Accessories

Choose from a variety of display and marker rails, accessories, directories, cases, and mobile units.



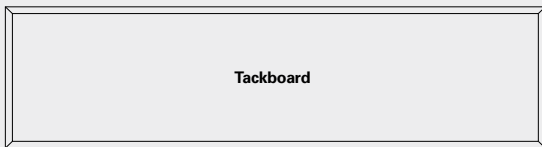
## CONFIGURATIONS / SIZES & HOW TO ORDER

### CONFIGURATIONS

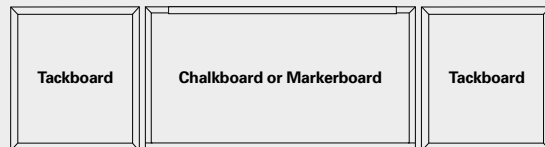
TYPICAL MARKERBOARD, CHALKBOARD, & TACKBOARD CONFIGURATIONS:



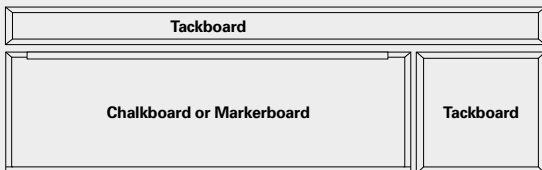
Type A



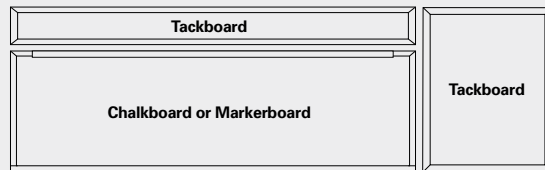
Type CO



Type C



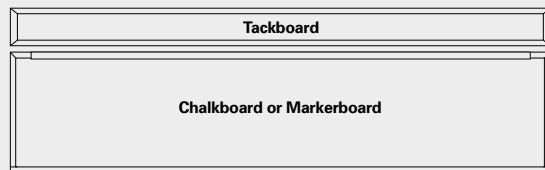
Type ER (Tackboard on Right)—Type EL (Tackboard on Left)



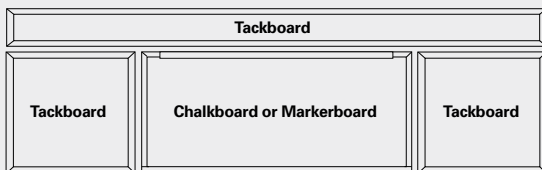
Type GR (Tackboard on Right)—Type GL (Tackboard on Left)



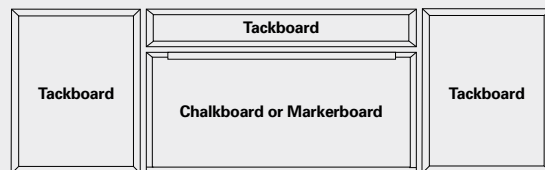
Type BR (Tackboard on Right)—Type BL (Tackboard on Left)



Type D



Type F



Type H



## WHO WE ARE

Only ASI Group designs, engineers, and manufactures fully integrated washroom accessories, partitions, lockers, and visual display products from one source.

The ASI Group is known for innovative products, speed to market, and the widest offering of materials and products

in the industry. Our family of companies work together with one mission in mind—"To make our customers successful by providing value that exceeds price and an excellent service experience."



**1** Glendon College, Toronto, Ontario



### TOILET PARTITIONS

ASI offers the most comprehensive collection of plastic, plastic laminate, powder coated, Compact HPL, and stainless steel partitions from one source.



### WASHROOM ACCESSORIES

The world's leading manufacturer of commercial washroom accessories. We offer the most comprehensive selection of washroom accessories available anywhere.





**WE ARE LASER FOCUSED ON DELIVERING EXACTLY WHAT YOU NEED—  
WHERE AND WHEN YOU NEED IT.**

With operating units and offices in the USA, Canada, Australia, Belgium, UK, Middle East, and Mexico, along with sales in more than 50 countries, our ability to serve is not limited by geography.

Our broad scope helps meet the needs of healthcare, education, office, and retail buildings, as well as airports, stadiums, government offices, cultural centers, and hotel/restaurant operations.

**SALES IN OVER 50 COUNTRIES**   **385+** DOMESTIC AND INTERNATIONAL SALES REPRESENTATIVES   **1,000+** HIGHLY SKILLED EMPLOYEES   **>1.3** MILLION SQ. FT. MANUFACTURING & OFFICE FACILITIES



**2** Perimeter College: Sky Room, Decatur, Georgia

**3** Perimeter College: Sky Room, Decatur, Georgia

**4** Glendon College, Toronto, Ontario



**STORAGE SOLUTIONS**

A wide range of colors and materials including steel, solid plastic, and phenolic.



**VISUAL DISPLAY PRODUCTS**

Through constant research, innovation, and development, we design and manufacture high quality visual display products that are easy to install and require little maintenance.





Phone: 905.822.4287  
Fax: 905.823.6885  
Web: [asi-visualdisplayproducts.com](http://asi-visualdisplayproducts.com)

© 2022 ASI Visual Display Products, Inc.